

Salmon Creek

10th Ave.

Okanogan

N48°21'36"

W119°36'36"

N48°22'48"

W119°35'24"

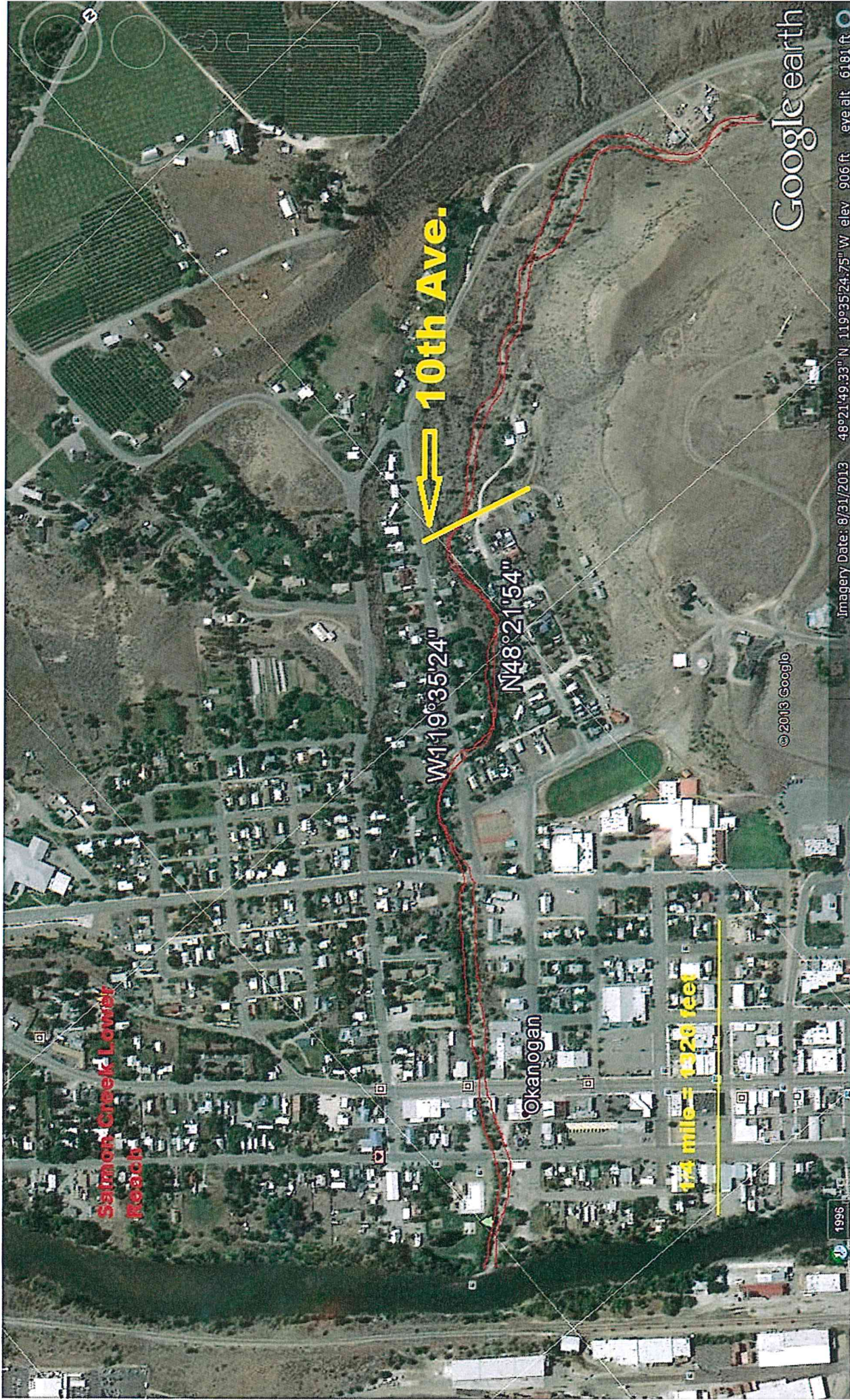
1 mile = 5,280 feet

Google earth

Imagery Date: 8/31/2013 48°22'39.25" N 119°35'41.73" W elev 1296 ft eye alt 13792 ft

© 2013 Google

1996 W119°34'12"



Salmon Creek Lomby
Reach

10th Ave.

W119°35'24"

N48°21'54"

Okanogan

1.4 miles = 1920 feet

© 2013 Google

Google earth

1996

Imagery Date: 8/31/2013 48°21'49.33" N 119°35'24.75" W elev 906 ft eye alt 6181 ft

10th Ave.

Salmon Creek Upper Reach

N48°22'30"

W119°36'36"

N48°23'6"

1/2 mile = 2,640 feet

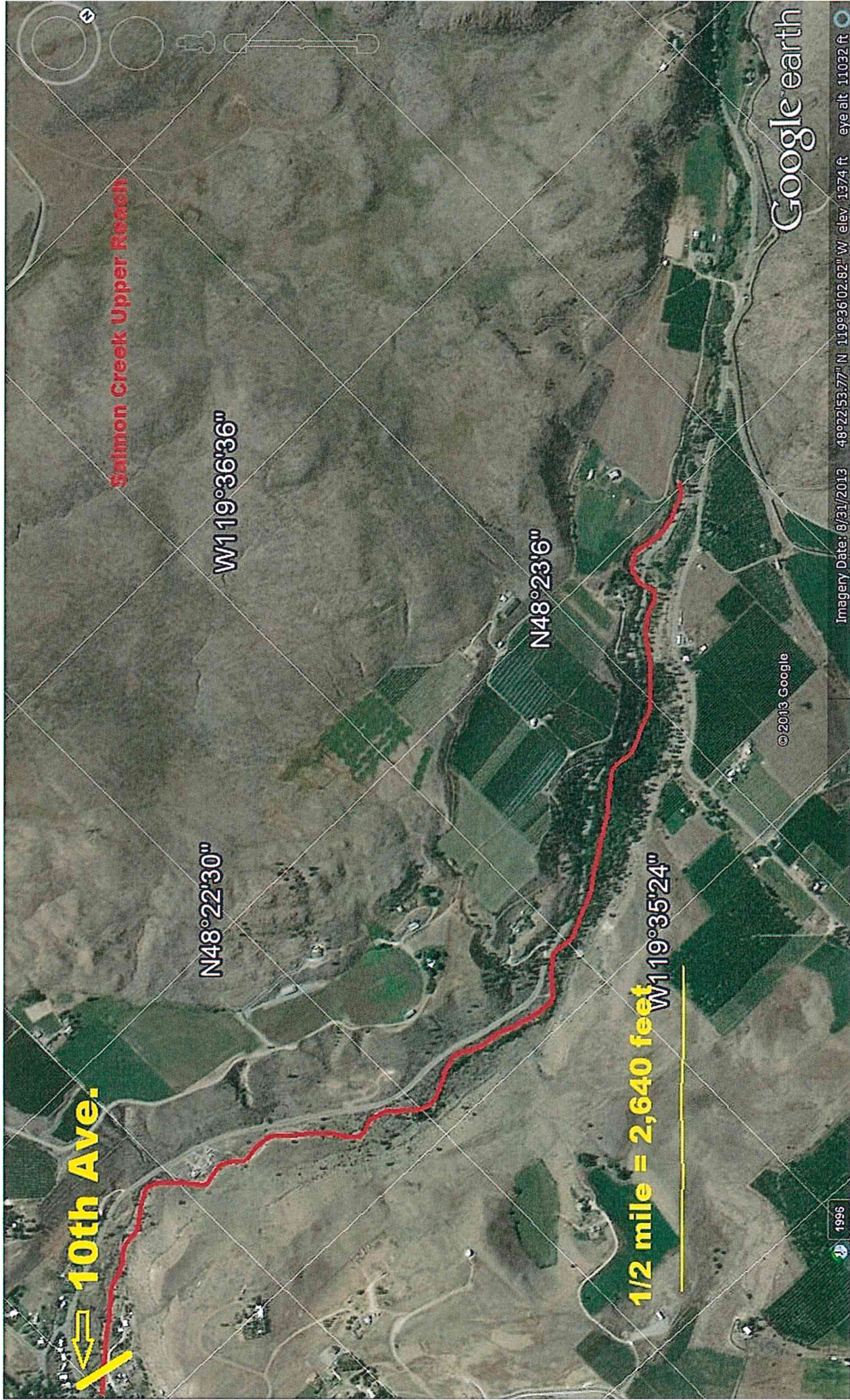
W119°35'24"

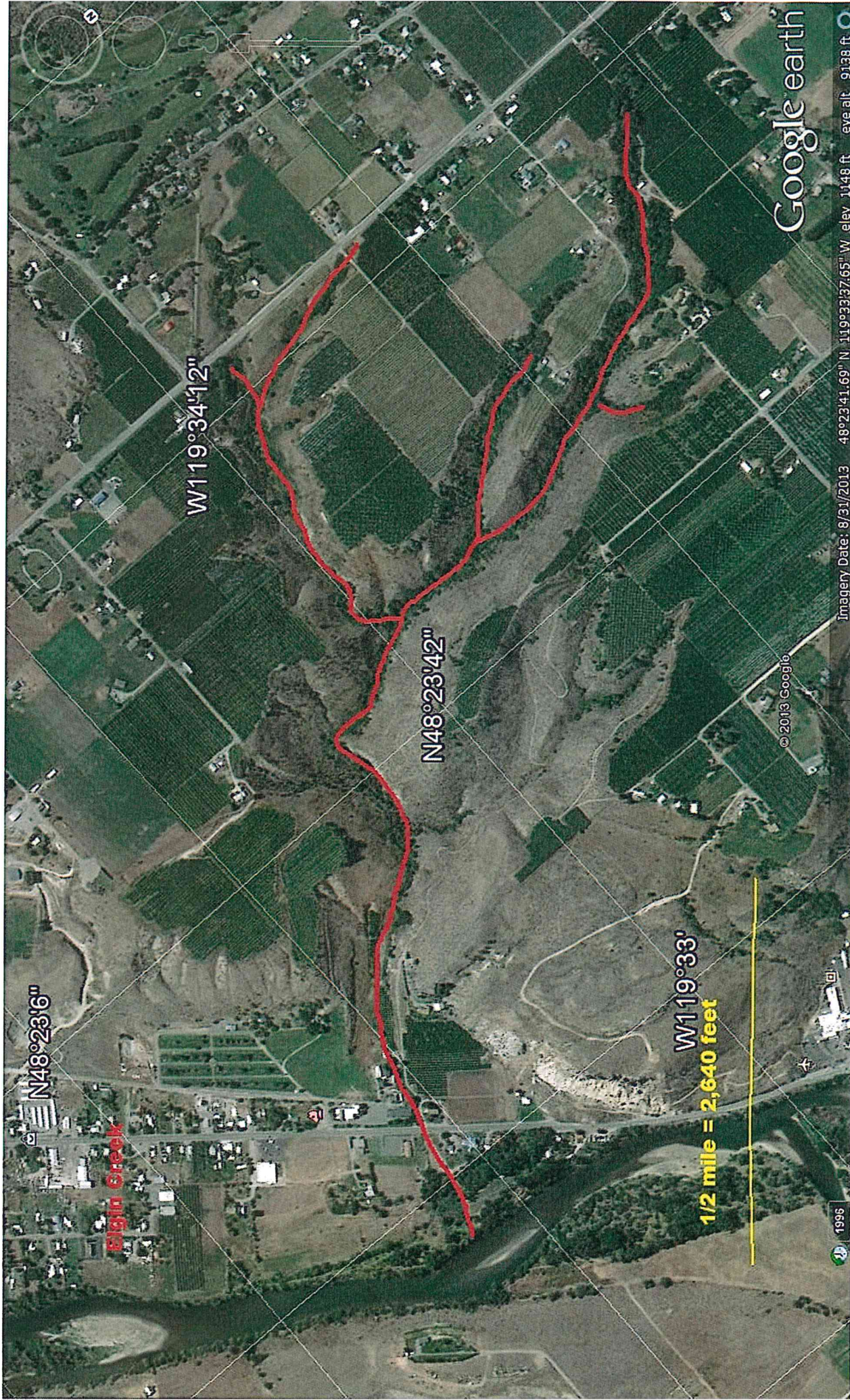
© 2013 Google

Google earth

1995

Imagery Date: 8/31/2013 48°22'53.77" N 119°36'02.82" W elev. 1374 ft eye alt. 11032 ft





N48°23'6"

Elgin Creek

W119°34'12"

N48°23'42"

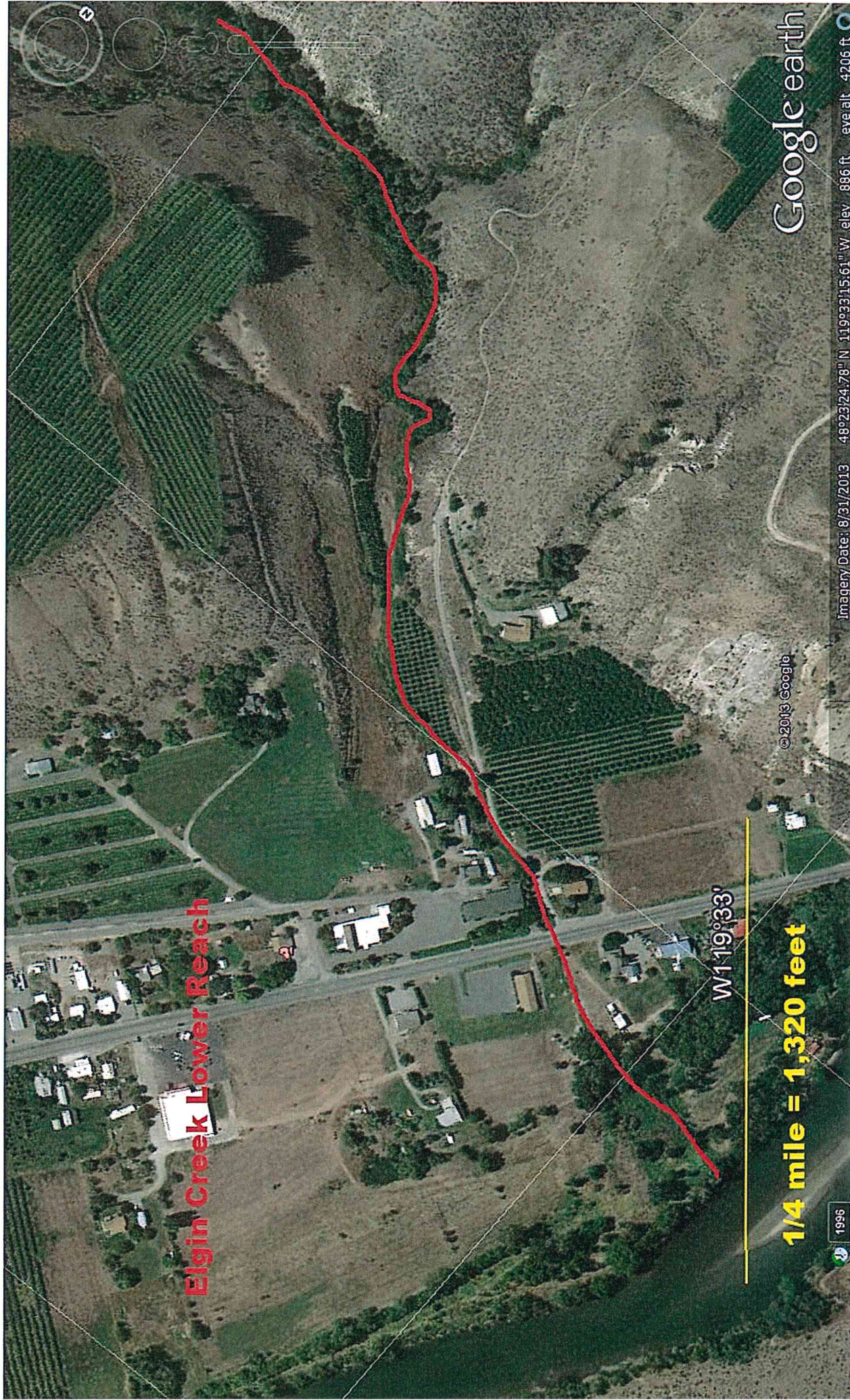
W119°33'
1/2 mile = 2,640 feet

Google earth

Imagery Date: 8/31/2013 48°23'41.69" N 119°33'37.65" W elev 1148 ft eye alt 9138 ft

© 2013 Google

1996



Elgin Creek Lower Reach

W119°33'

1/4 mile = 1,320 feet

Google earth

Imagery Date: 8/31/2013 48°23'24.78" N 119°33'15.61" W elev 886 ft eye alt 4206 ft

© 2013 Google

1996