

APPROXIMATE SCALE  
 2000 0 2000 FE

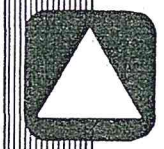
NATIONAL FLOOD INSURANCE PROGRAM

**FIRM**  
 FLOOD INSURANCE RATE MAP  
**OKANOGAN COUNTY, WASHINGTON**  
 UNINCORPORATED AREA

PANEL 925 OF 1425  
 (SEE MAP INDEX FOR PANELS NOT PRINTED)

COMMUNITY-PANEL NUMBER  
 530117 0925 B

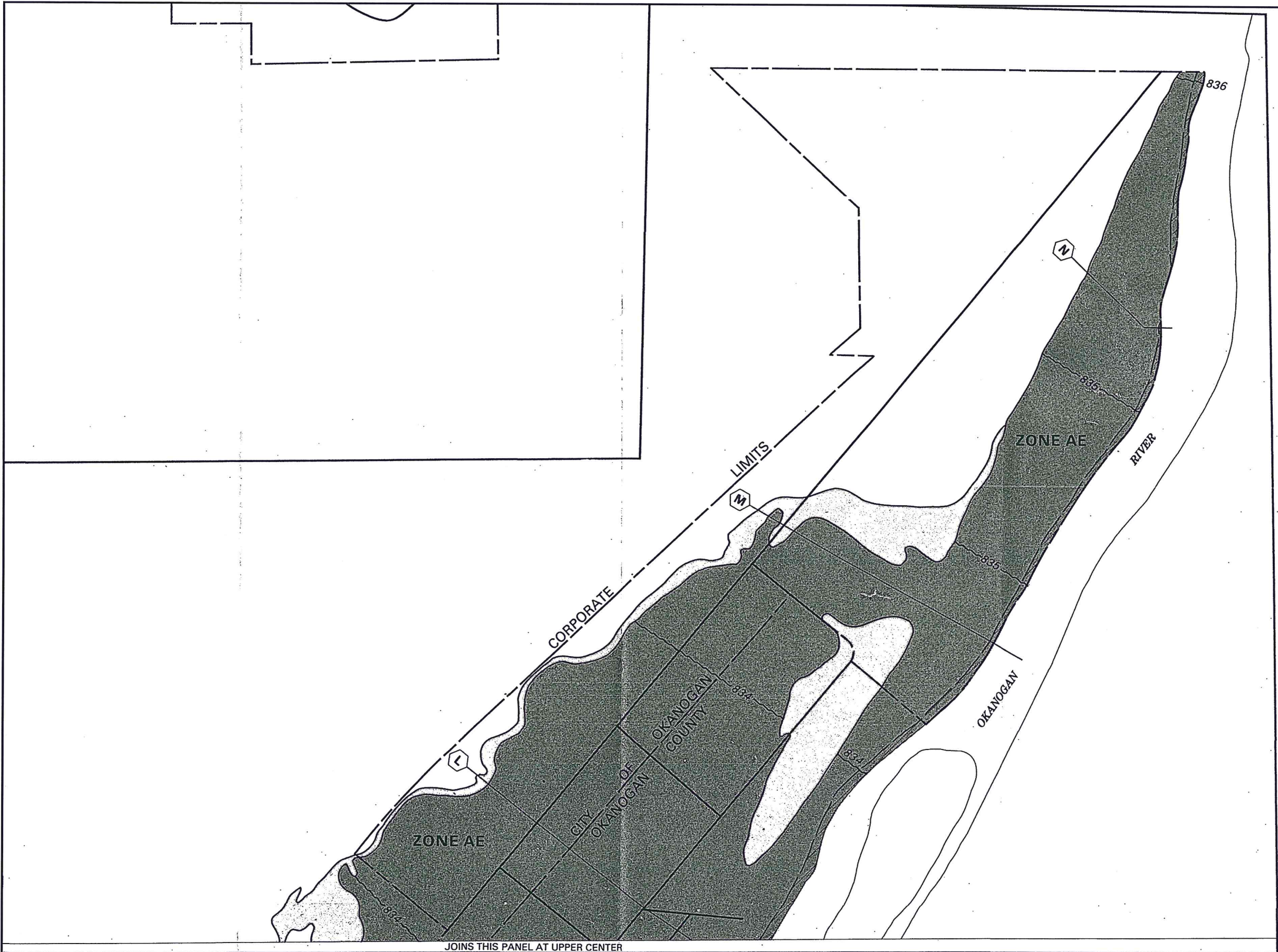
MAP REVISED:  
 FEBRUARY 10, 1981



federal emergency management agency  
 federal insurance administration

This is an official copy of a portion of the above referenced flood map. It was extracted using F-MIT On-Line. This map does not reflect changes or amendments which may have been made subsequent to the date on the title block. For the latest product information about National Flood Insurance Program flood maps check the FEMA Flood Map Store at [www.msc.fema.gov](http://www.msc.fema.gov)

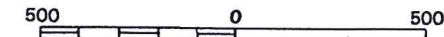




JOINS THIS PANEL AT UPPER CENTER



APPROXIMATE SCALE IN FEET



NATIONAL FLOOD INSURANCE PROGRAM

**FIRM**  
FLOOD INSURANCE RATE MAP

CITY OF  
OKANOGAN,  
WASHINGTON  
OKANOGAN COUNTY

ONLY PANEL PRINTED

COMMUNITY-PANEL NUMBER  
530119 0001 C

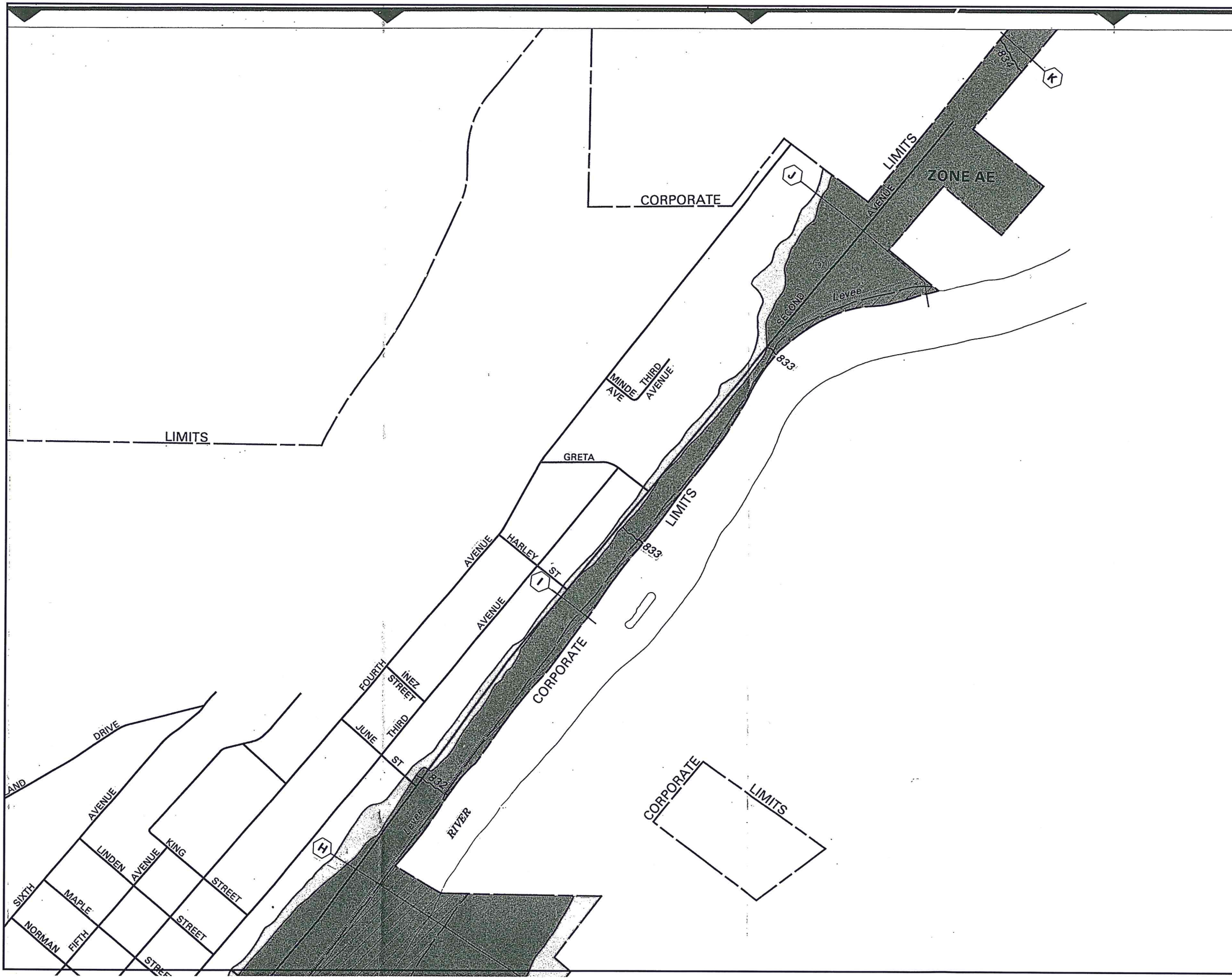
MAP REVISED:  
AUGUST 2, 1995



Federal Emergency Management Agency

This is an official copy of a portion of the above referenced flood map. It was extracted using F-MIT On-Line. This map does not reflect changes or amendments which may have been made subsequent to the date on the title block. For the latest product information about National Flood Insurance Program flood maps check the FEMA Flood Map Store at [www.msc.fema.gov](http://www.msc.fema.gov)





APPROXIMATE SCALE IN FEET  
 500 0 500

NATIONAL FLOOD INSURANCE PROGRAM


**FIRM**  
 FLOOD INSURANCE RATE MAP

CITY OF OKANOGAN,  
 WASHINGTON  
 OKANOGAN COUNTY

ONLY PANEL PRINTED

COMMUNITY-PANEL NUMBER  
 530119 0001 C

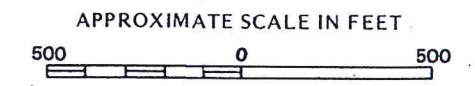
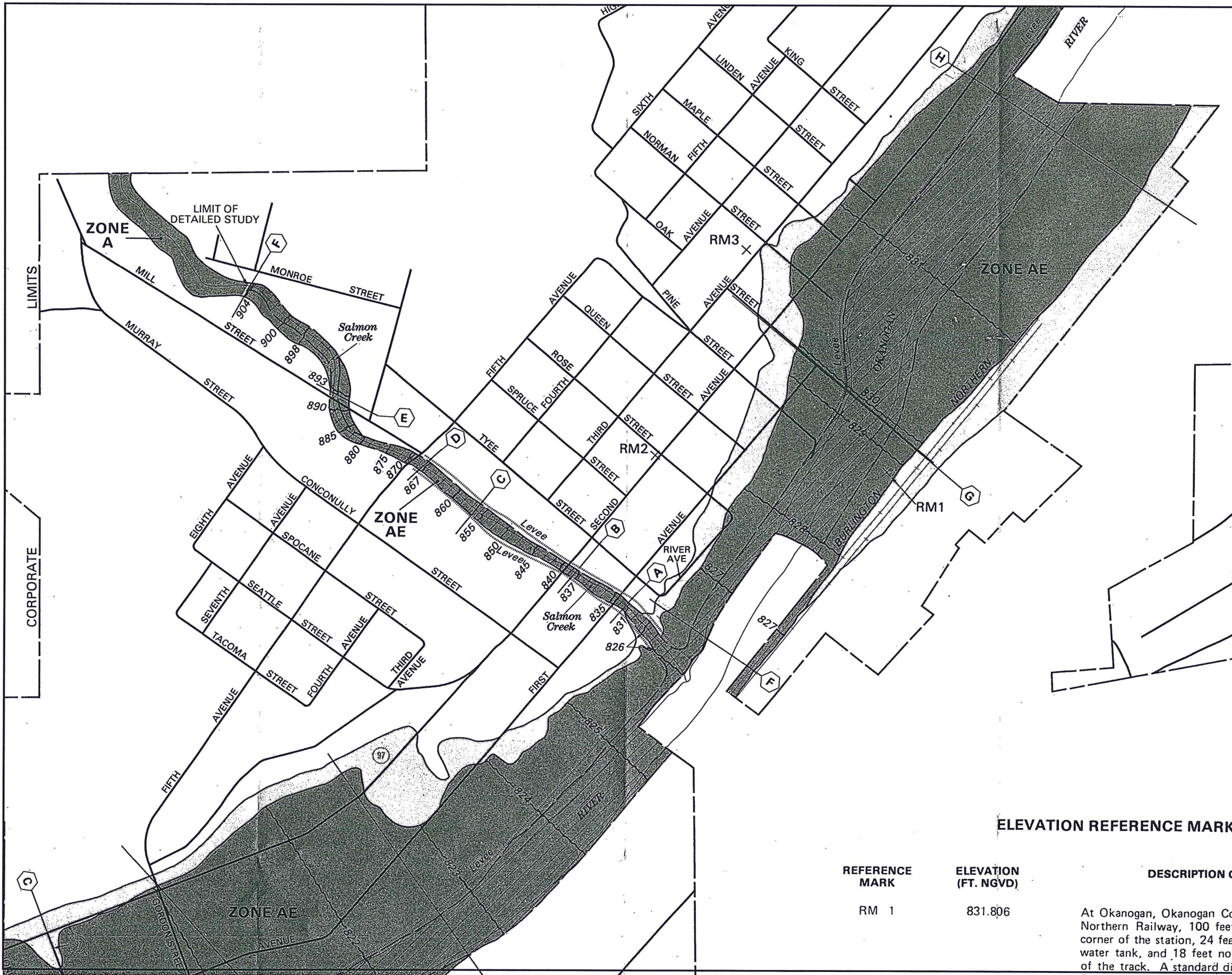
MAP REVISED:  
 AUGUST 2, 1995



Federal Emergency Management Agency

This is an official copy of a portion of the above referenced flood map. It was extracted using F-MIT On-Line. This map does not reflect changes or amendments which may have been made subsequent to the date on the title block. For the latest product information about National Flood Insurance Program flood maps check the FEMA Flood Map Store at [www.msc.fema.gov](http://www.msc.fema.gov)





NATIONAL FLOOD INSURANCE PROGRAM


**FIRM**  
FLOOD INSURANCE RATE MAP

CITY OF OKANOGAN,  
WASHINGTON  
OKANOGAN COUNTY

ONLY PANEL PRINTED

COMMUNITY-PANEL NUMBER  
530119 0001 C

MAP REVISED:  
AUGUST 2, 1995



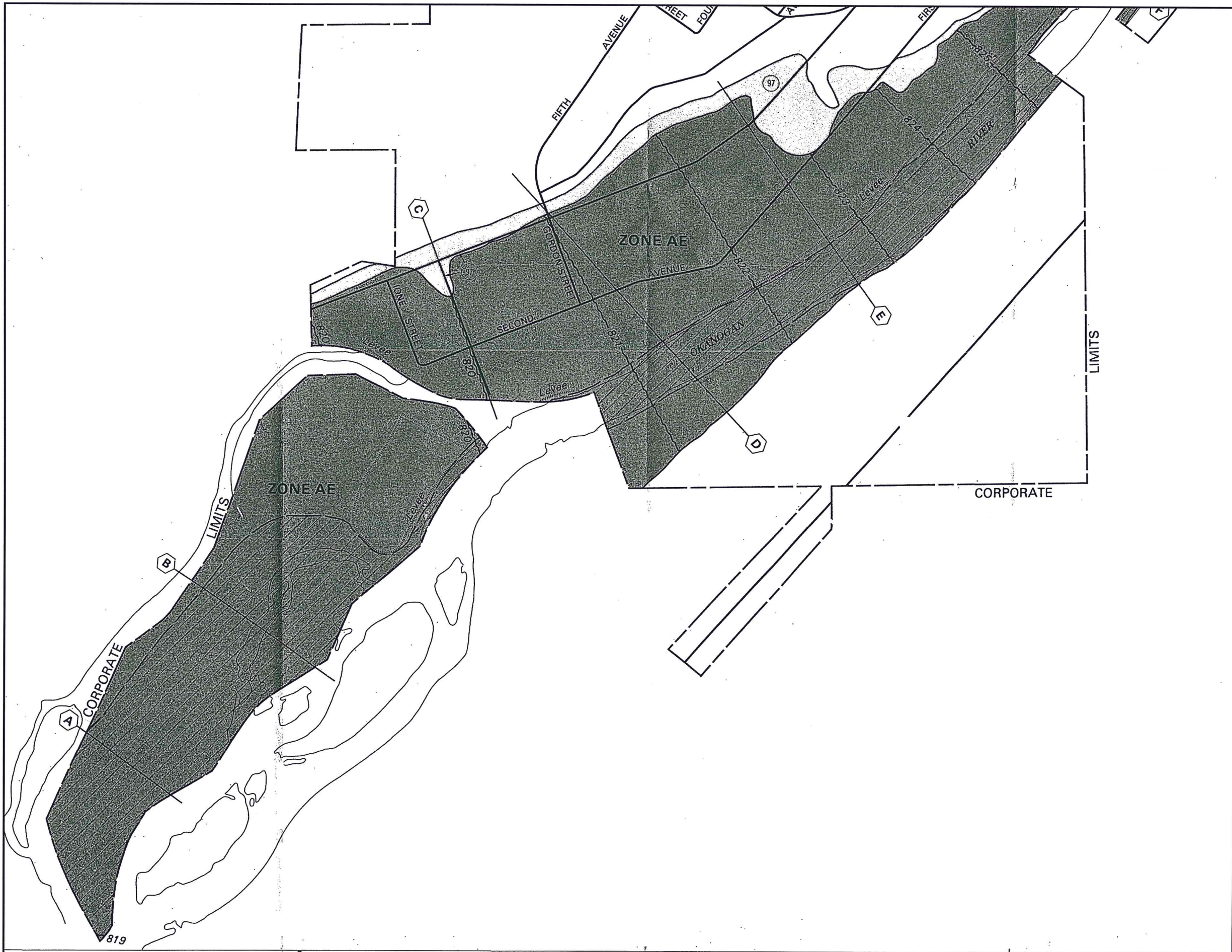
Federal Emergency Management Agency

**ELEVATION REFERENCE MARK**

REFERENCE MARK	ELEVATION (FT. NGVD)	DESCRIPTION
RM 1	831.806	At Okanogan, Okanogan Co Northern Railway, 100 feet corner of the station, 24 feet water tank, and 18 feet north of the track. A standard di

This is an official copy of a portion of the above referenced flood map. It was extracted using F-MIT On-Line. This map does not reflect changes or amendments which may have been made subsequent to the date on the title block. For the latest product information about National Flood Insurance Program flood maps check the FEMA Flood Map Store at [www.msc.fema.gov](http://www.msc.fema.gov)





APPROXIMATE SCALE IN FEET  
 500 0 500

NATIONAL FLOOD INSURANCE PROGRAM

**FIRM**  
**FLOOD INSURANCE RATE MAP**

CITY OF  
 OKANOGAN,  
 WASHINGTON  
 OKANOGAN COUNTY

ONLY PANEL PRINTED

COMMUNITY-PANEL NUMBER  
 530119 0001 C

MAP REVISED:  
 AUGUST 2, 1995



Federal Emergency Management Agency

This is an official copy of a portion of the above referenced flood map. It was extracted using F-MIT On-Line. This map does not reflect changes or amendments which may have been made subsequent to the date on the title block. For the latest product information about National Flood Insurance Program flood maps check the FEMA Flood Map Store at [www.msc.fema.gov](http://www.msc.fema.gov)